



INDIA  
FUSION

INDIA  
CIRCUS  
*by* KRSNAA MEHTA  
A Godrej Enterprises Brand

In Collaboration With

**marshalls**  
India's No. 1 Walkcoverings





**Krsnaa Mehta, Founder & Design Director**

Krsnaa Mehta is globally recognised for his exceptional taste in textiles and art. His primary focus is on cultivating relationships, whether they are related to space, materials, or personal connections, all through his unique home decor designs. This approach results in spaces and combinations that are daring, harmonious, and dynamic.

Over the years, Krsnaa has been involved with various well-known brands in India and beyond, such as Good Earth, The Elephant Company, Bombay Store, Westside, Celio, and others. In recent times, he has earned several noteworthy accolades, including four consecutive ELLE DECO International Design Awards (EDIDA) and the honor of representing India at IMAGINE India at MACYS in San Francisco, California. His work has been featured in prestigious publications like Vogue, Elle Décor, Inside Out, Architectural Digest, and numerous international lifestyle magazines, establishing a strong reputation for his designs in the industry.

For Krsnaa Mehta, his design philosophy is encapsulated in the idea of "Taking Indian Contemporary to the World." With nearly two decades of experience in home decor and a deep-rooted connection to the industry, collaborating with Krsnaa Mehta promises a seamless and enriching project experience.

Krsnaa is Executive Director and Design visionary of Indie Circus By Krsnaa Mehta, A Godrej Enterprises Brand. Indie Circus honours & celebrates India through its myriad designs and takes you on a magical journey across the country. The Founder and design extraordinaire Krsnaa Mehta has been weaving these stories through his contemporary-chic and elegant collection of home décor and more.



**MDS** is committed to creating unique, high-quality wallcoverings using the latest technologies and premium substrates. With a strong focus on both domestic and export markets, MDS aims to redefine interior spaces through innovation, artistry, and superior craftsmanship.

If you live by international trends or like to outsource creative thinking to the best, leave it to our master designers at MDS, and browse through their expansive and breathtaking collections. Our memorable compilations to choose from already - Inspire, Funtime, Ombre, Florino, Modern Art, The Artist, Prekriti, Polo and many more, each designed artistically with a central theme.

MDS specializes in creating designs for Hotel projects, Retail chains, Educational Institutes, Corporates amongst others. This specialization coupled with our high end digital printing infrastructure brings together mesmerizing results on the walls.

Marshall's Design Studio from India's #1 wallcoverings brand - Marshall's, is shaping the future of wallcoverings - one wall at a time.



## INDIA FUSION

### **Colour is a power which directly influences the soul**

The saying by Wassily Kandinsky perfectly synchronises with the majestic collections of impressions crafted by Krsna Mehta. The world of interior design is incomplete without this prolific artist and designer known for bringing a perfect mix of bright colours and bold style influenced by Indian culture.

Imagine how fascinating it would look if these impressions could be experimented on none other than the Indian walls. Keeping this in mind, a revolutionary idea of bringing the rich hues of the Indian tapestry into Wallcoverings was coined by Marshalls in association with Krsna Mehta.

Now after the incredible success of the erstwhile four editions, Marshalls and Krsna Mehta are set to enthrall you yet again with its brand new 6th Season of the Designer Wallcoverings. Each Wallcovering has been crafted with utmost precision through new-age technical innovations.

Dive into the evergreen world of Indian culture as you flip through.





KM 5001







KM 5002





KM 5003





KM 5004





KM 5005







KM 5006





KM 5007







KM 5008





KM 5009







KM 5010





KM 5011







KM 5012





KM 4001







KM 4002





KM 4003







KM 4004







KM 4005







KM 4006





KM 4007







KM 4008







KM 4009







KM 4010







KM 4011





KM 4012





KM 4013







KM 4014





KM 4015







KM 4016



KM 4017







KM 3001







KM 3002







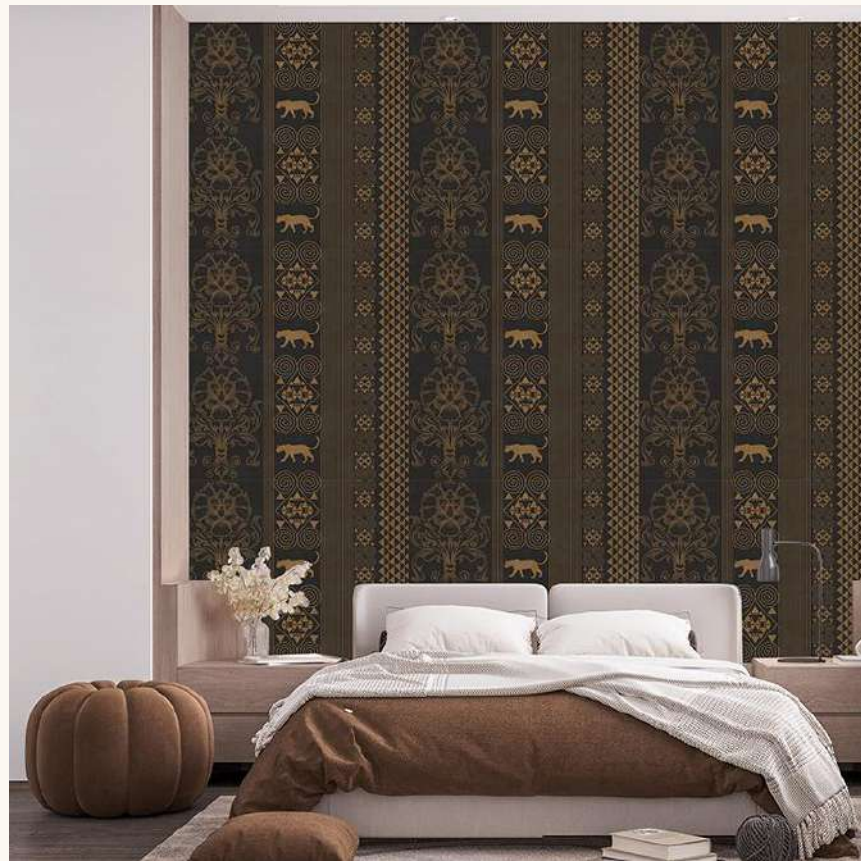
KM 3003







KM 3004







KM 3005







KM 3006







KM 3007







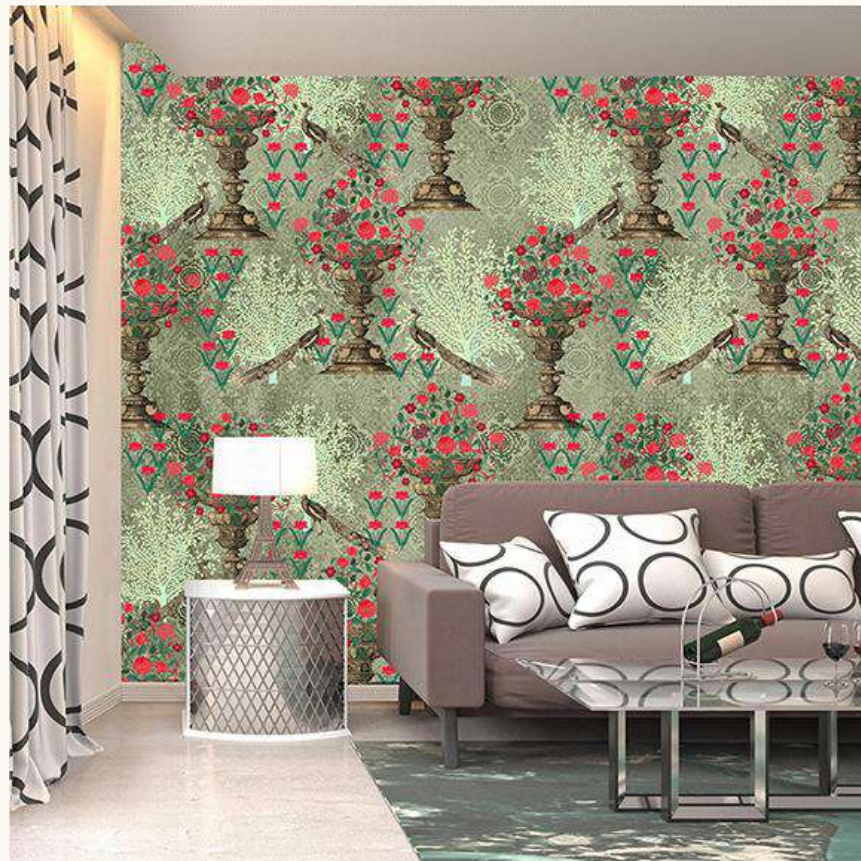
KM 3008







KM 3009







KM 3010







KM 3011

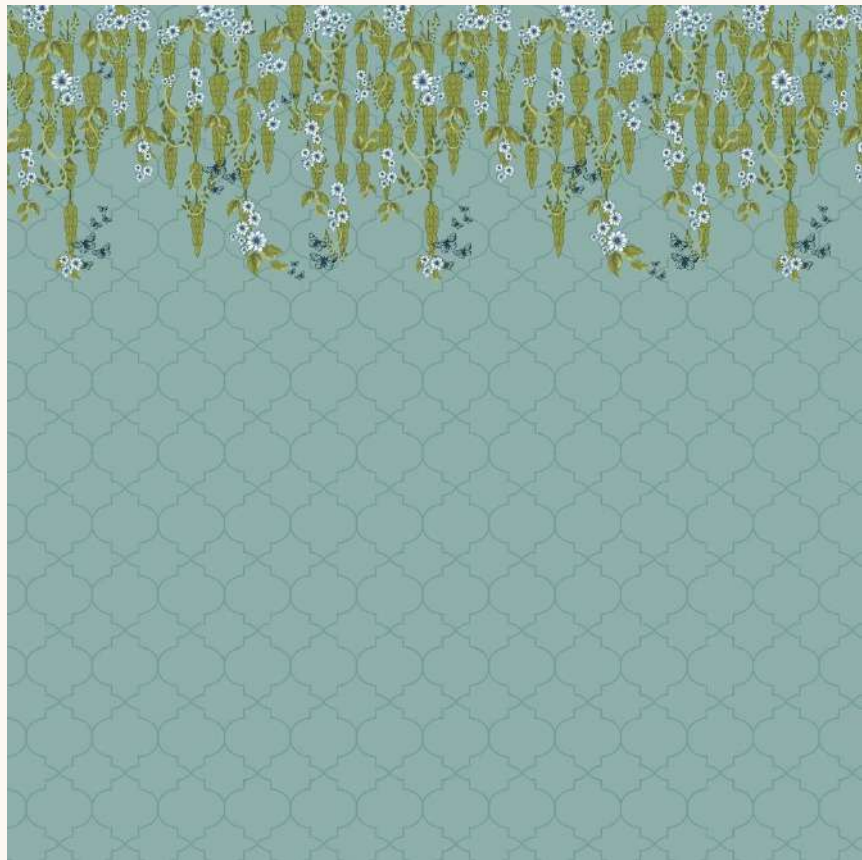




KM 3012







KM 3013



KM 3014







KM 3015





KM 3016







KM 1001



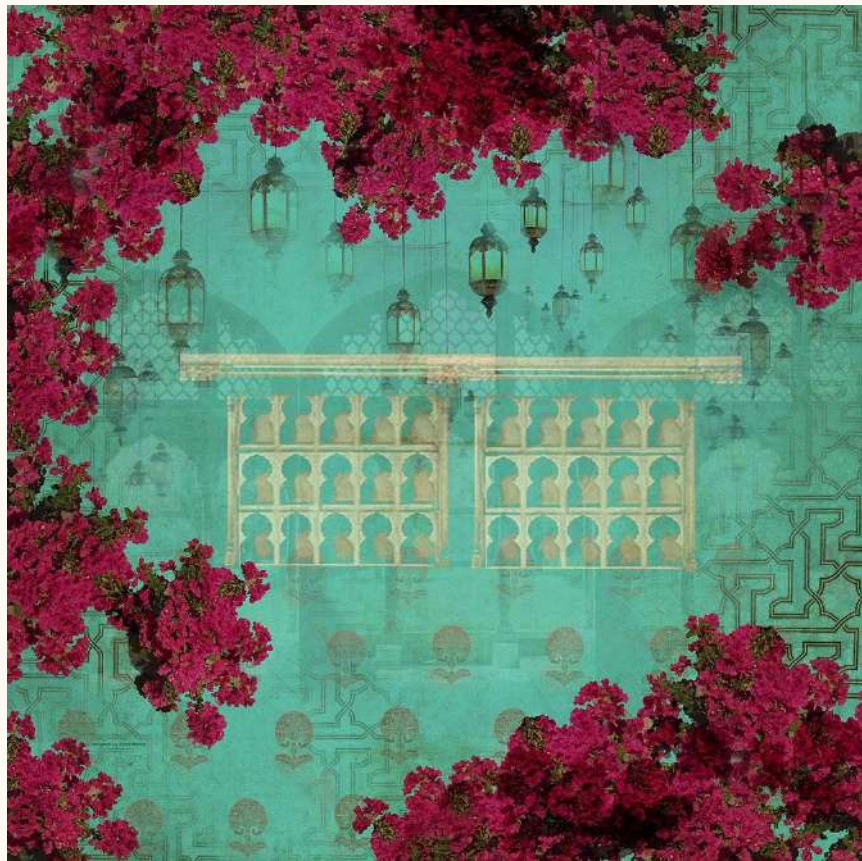




KM 1002

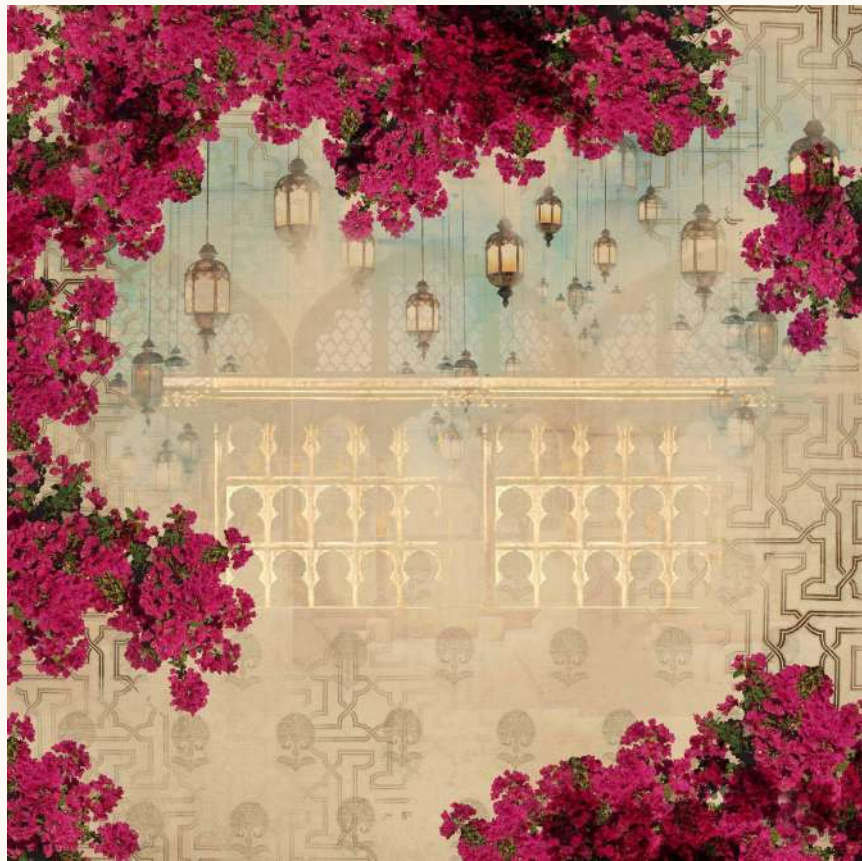






KM 1003





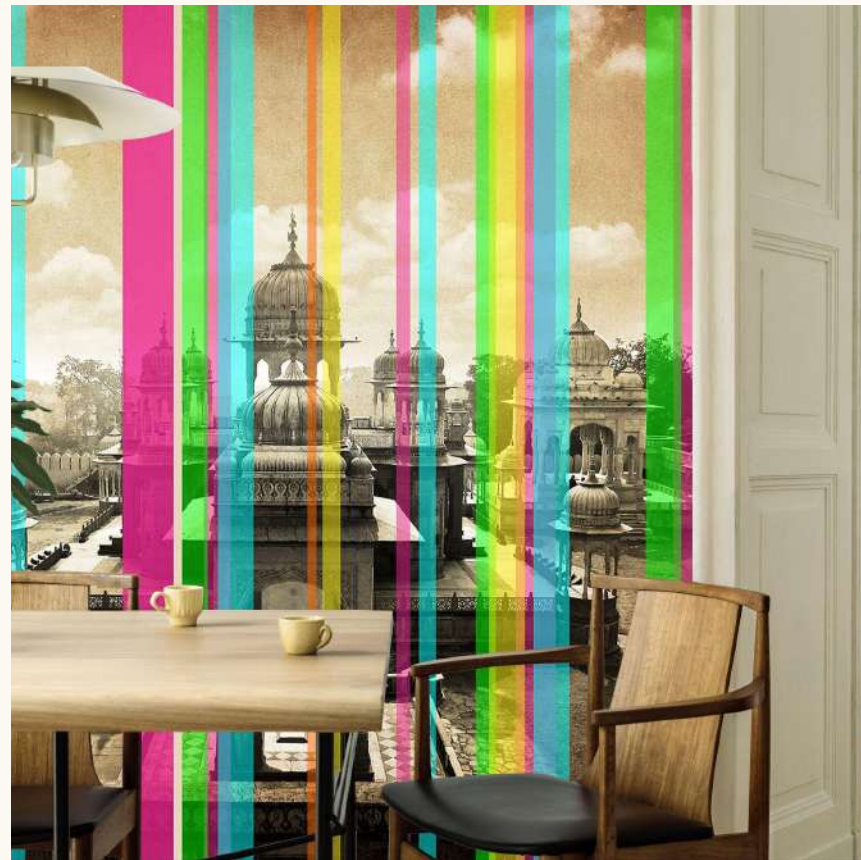
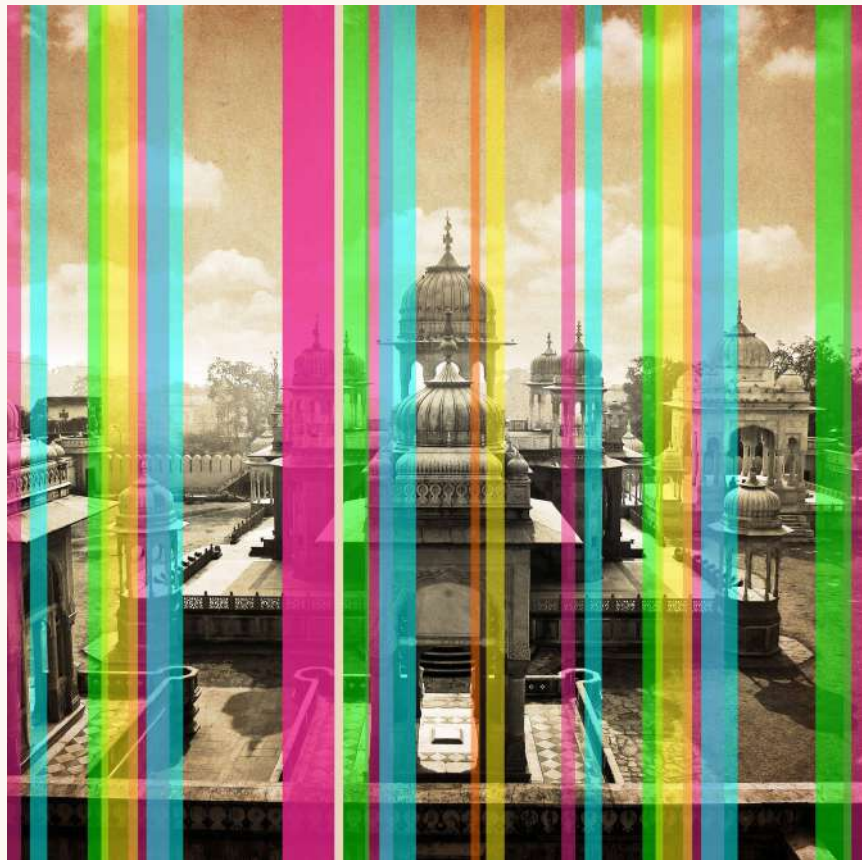
KM 1004







KM 1005



KM 1006





KM 1007



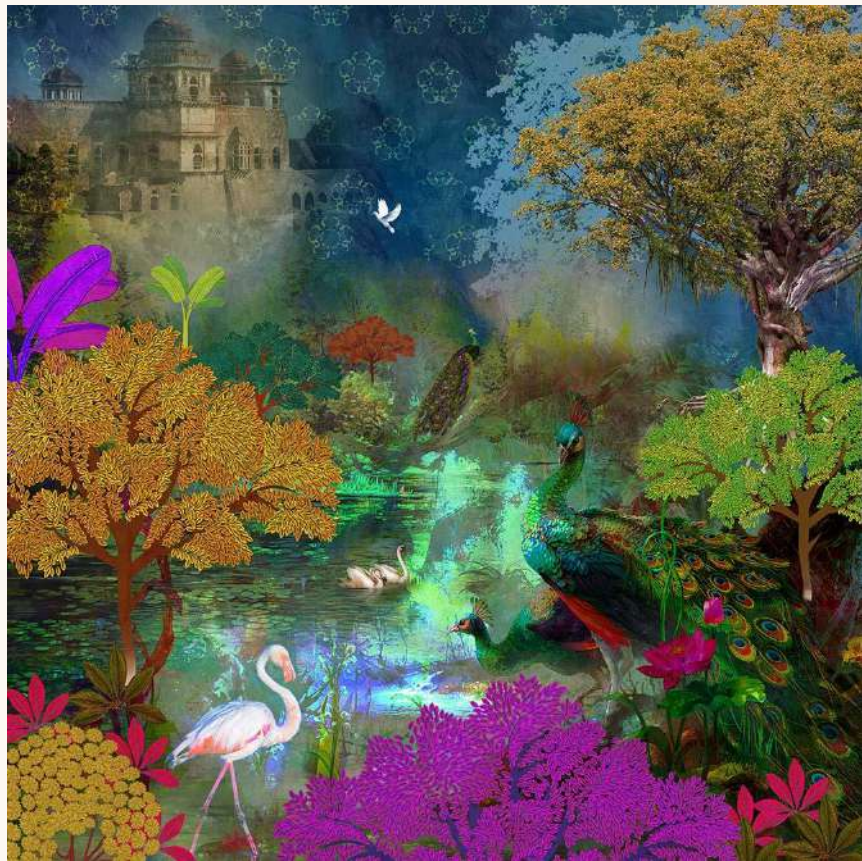




KM 1008



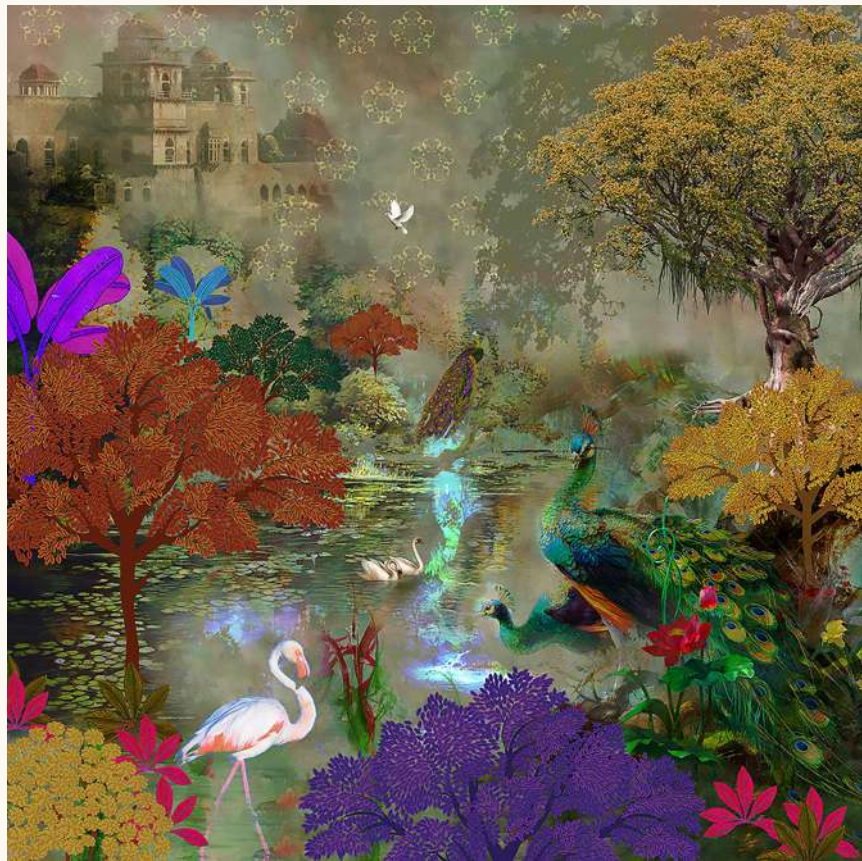




KM 1009







KM 1010







KM 1011







KM 1012







KM 1013



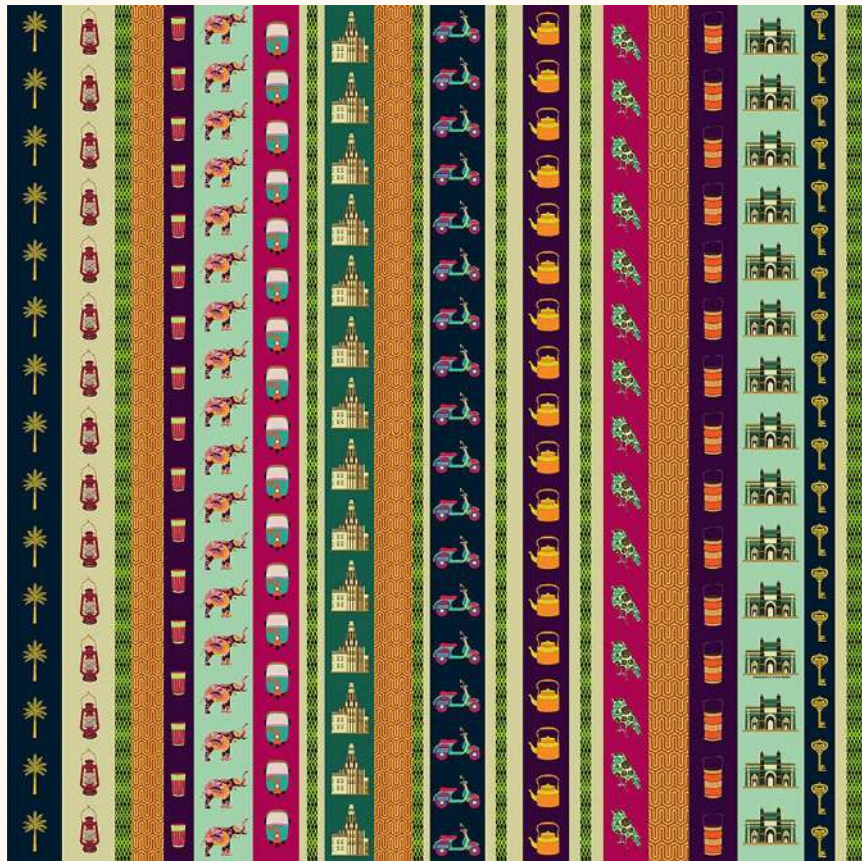




KM 1014

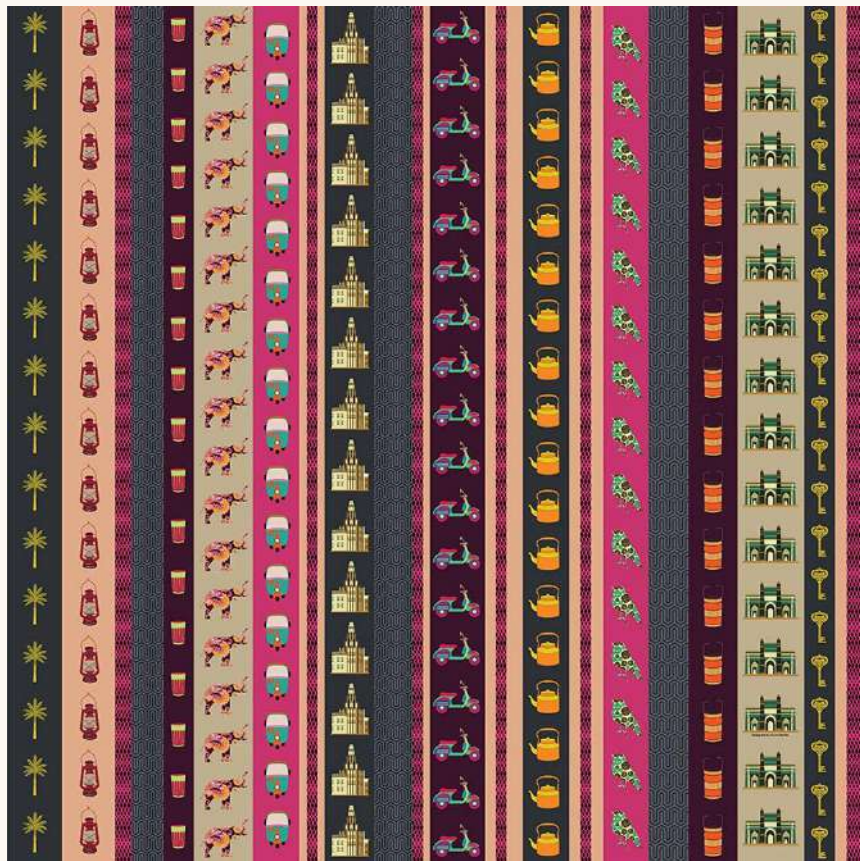






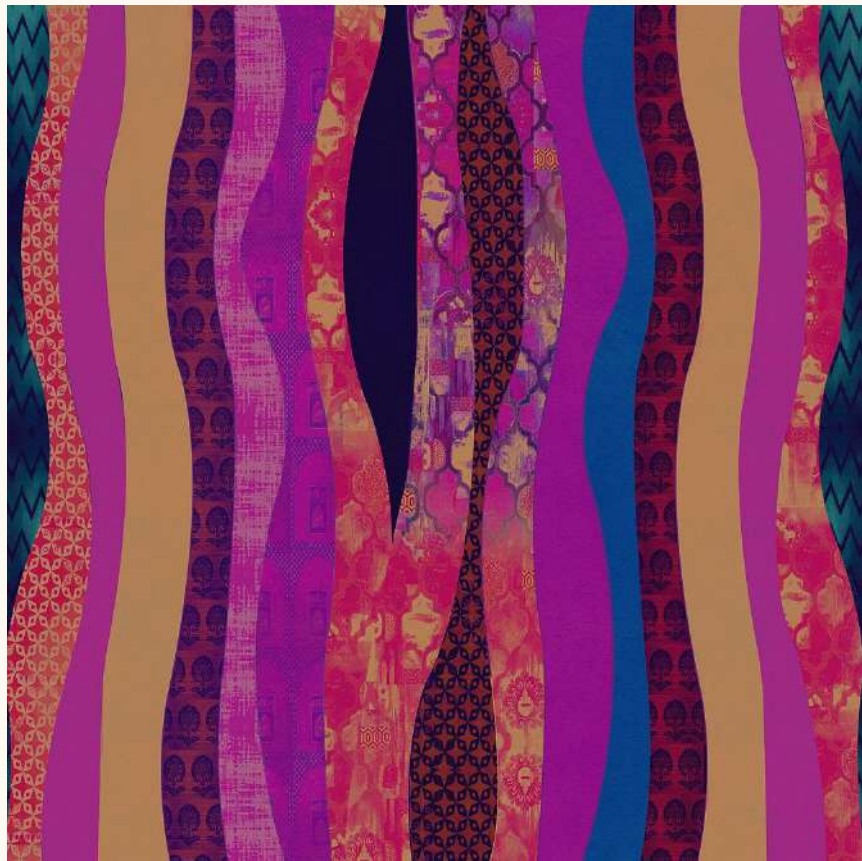
KM 1015





KM 1016





KM 1017



KM 1018







KM 1019







KM 1020

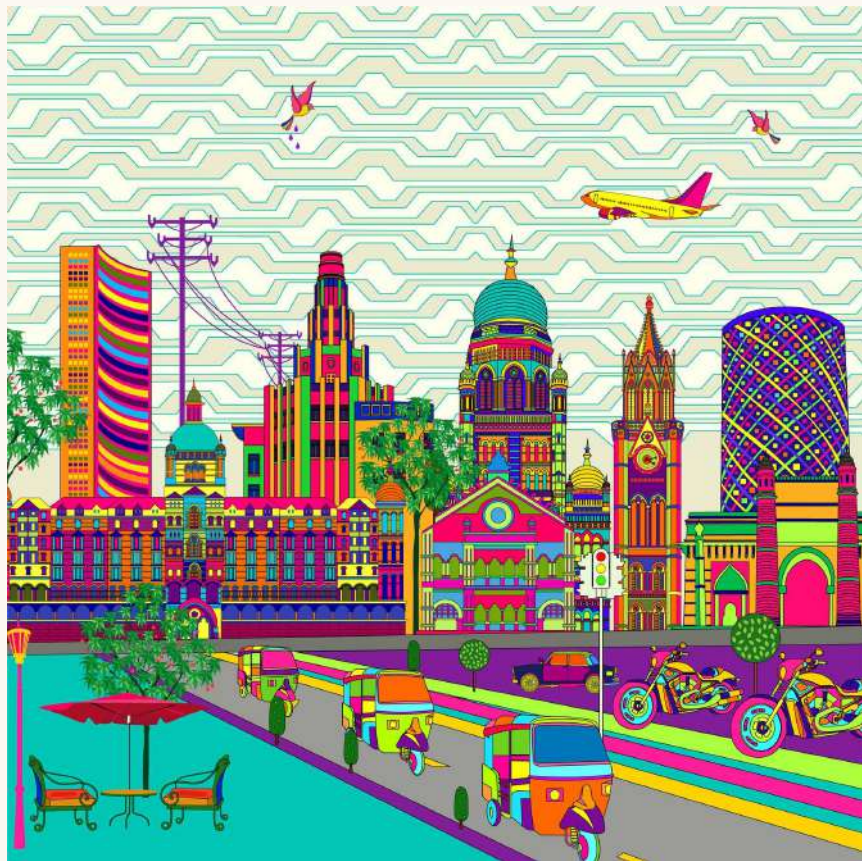






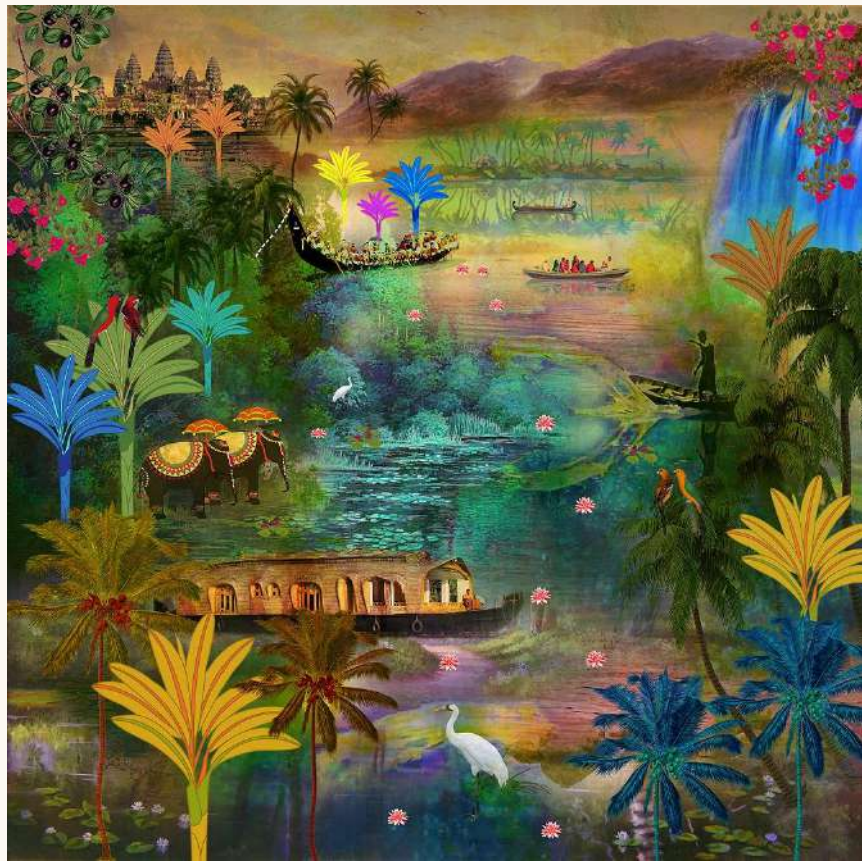
KM 1021





KM 1022





KM 1023







KM 1024







KM 1025



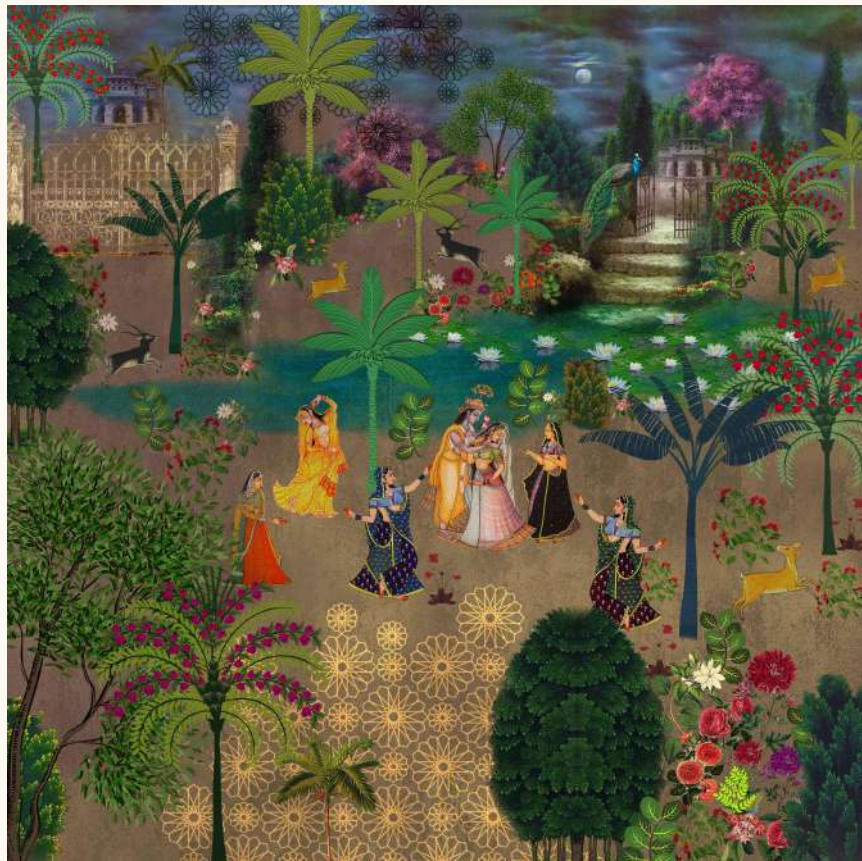




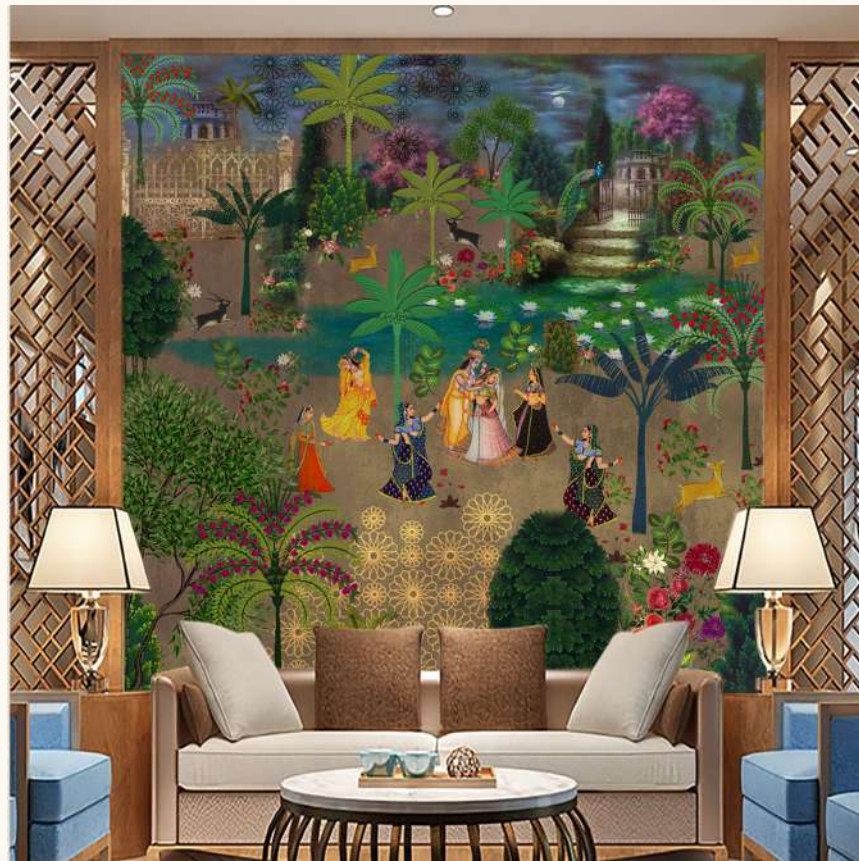
KM 1026







KM 1027



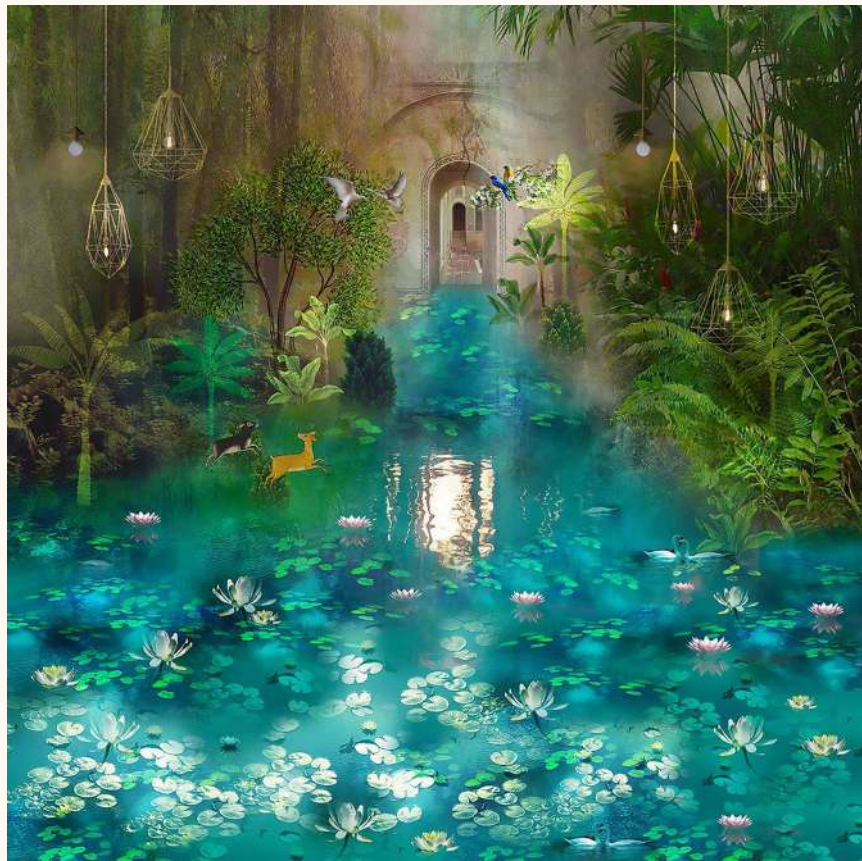




KM 1028

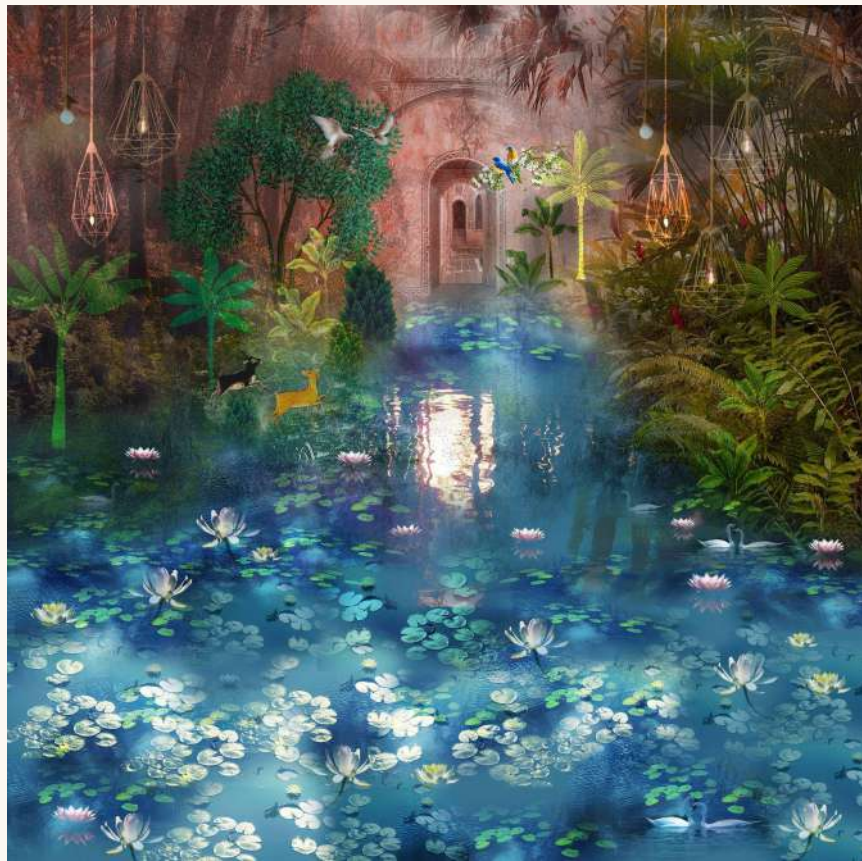






KM 1029

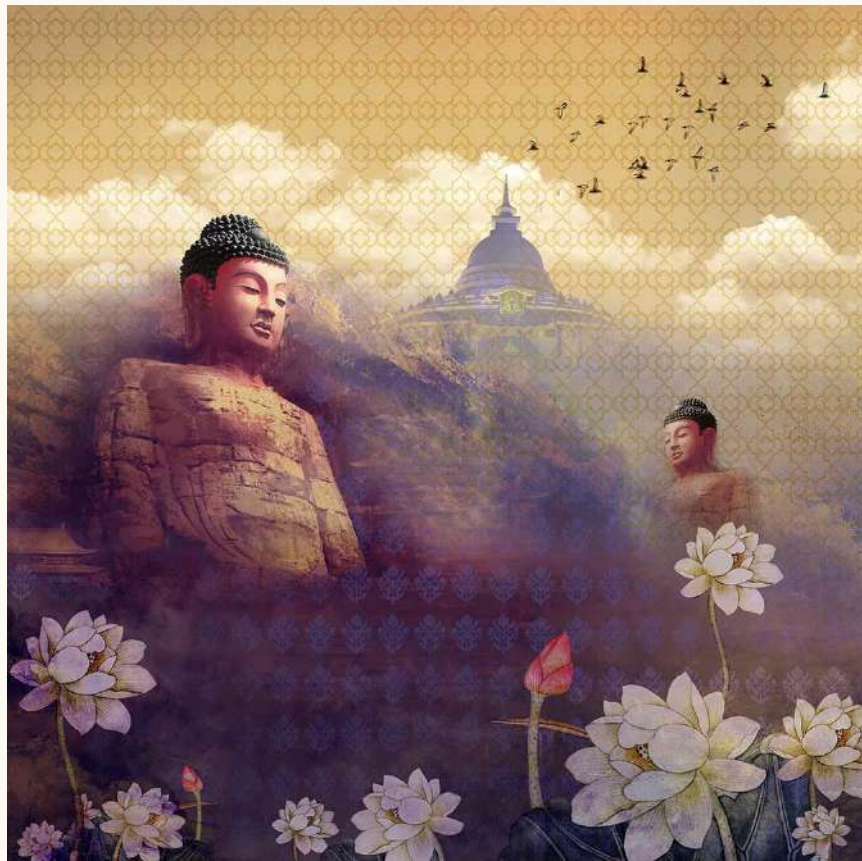




KM 1030



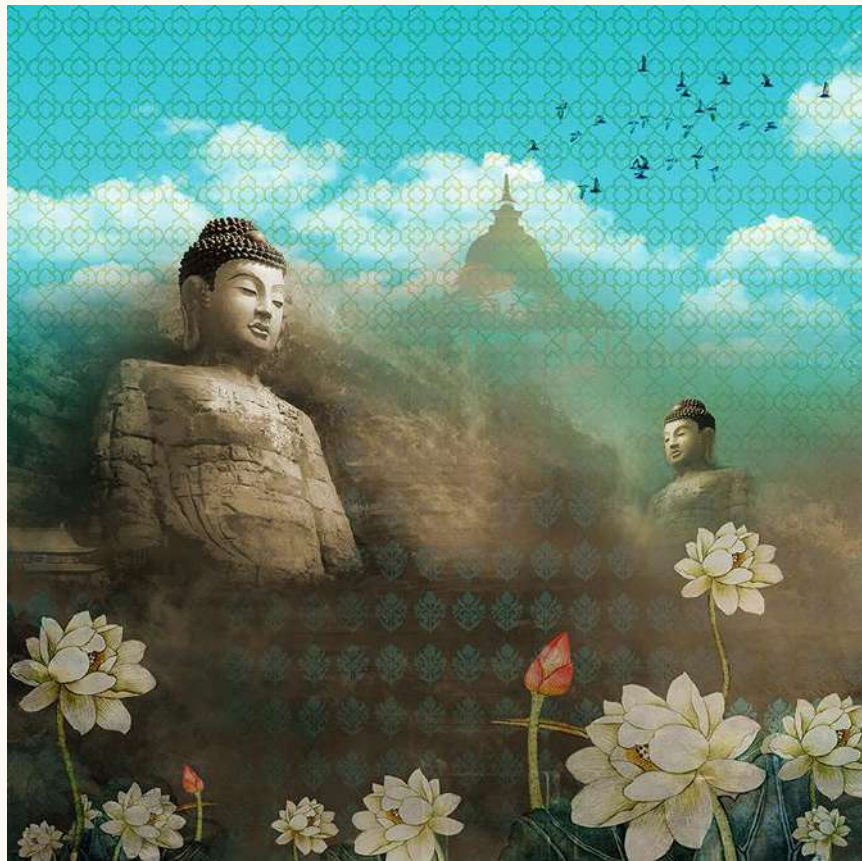




KM 1031







KM 1032







KM 1033

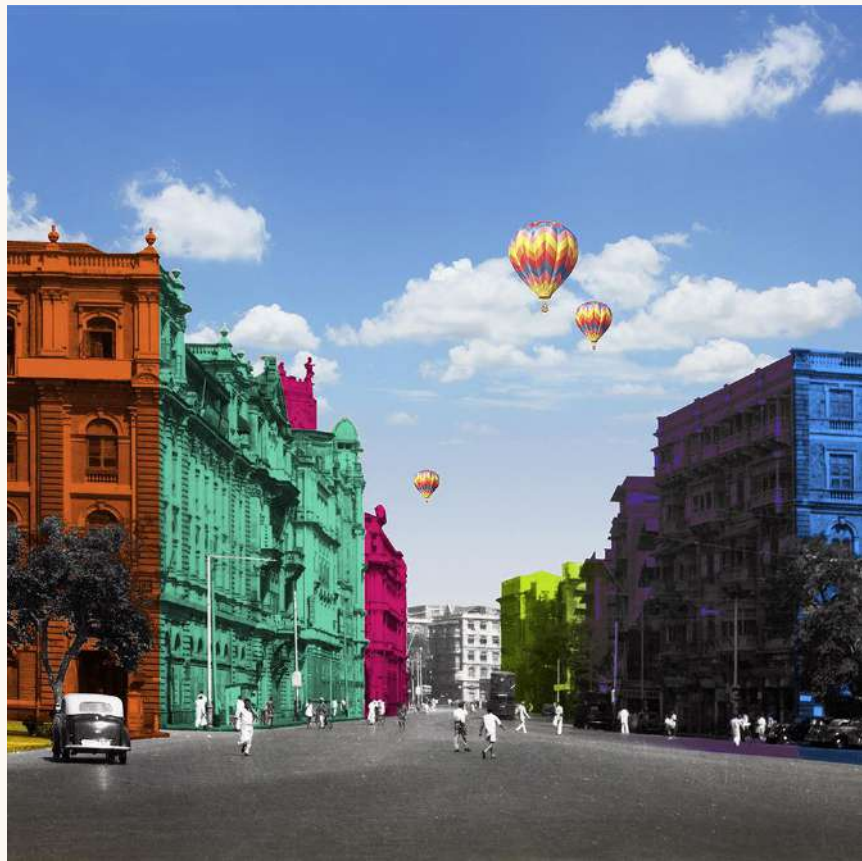




KM 1034







KM 1035





KM 1036

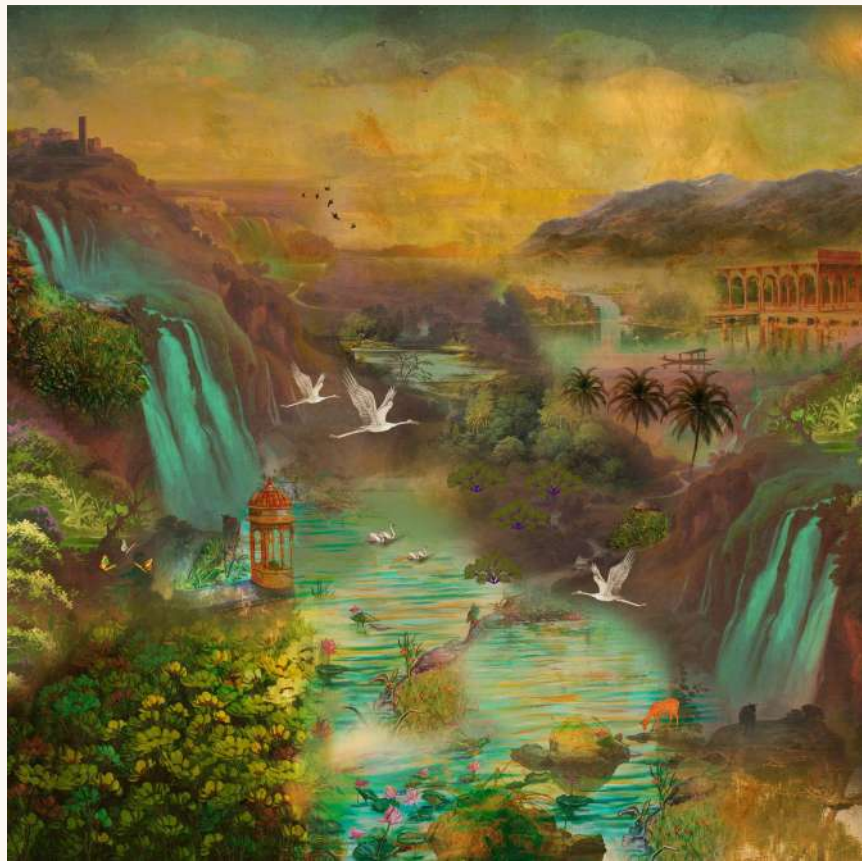




KM 1037







KM 1038







KM 1039



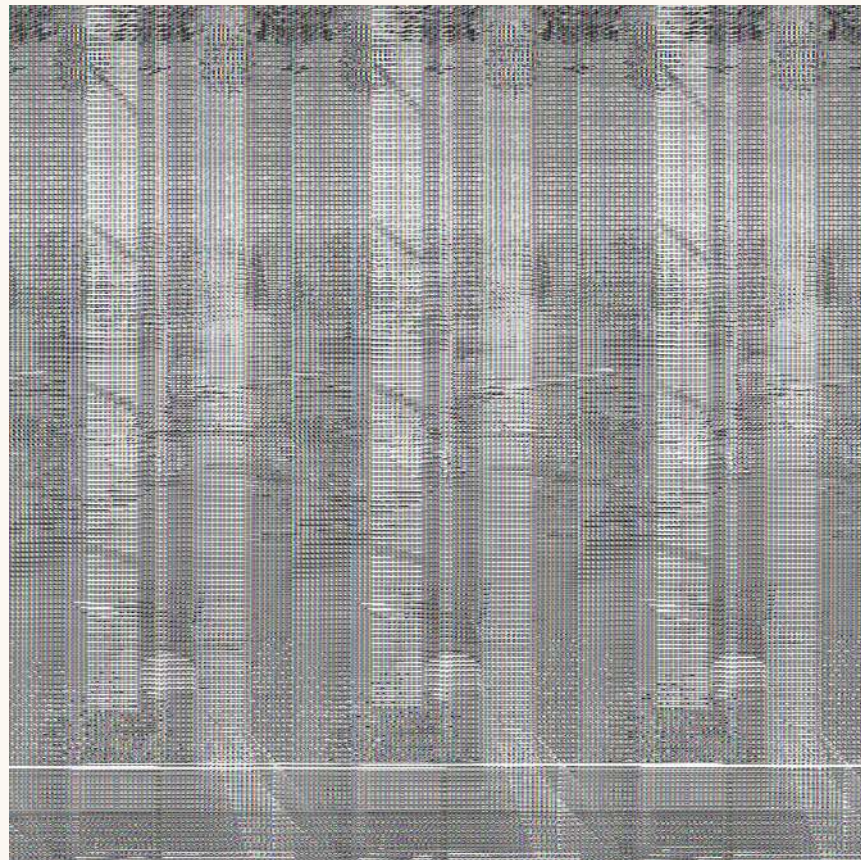


KM 1040





KM 1041



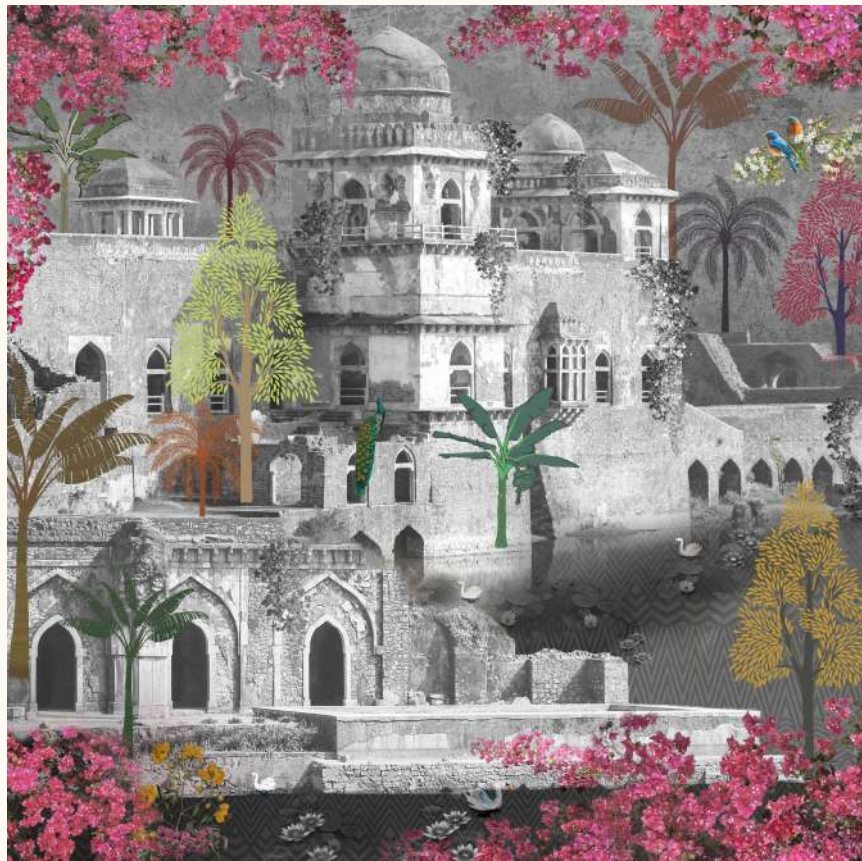




KM 1042







KM 1043







KM 1044







KM 1045





KM 1046







KM 1047







KM 1048







KM 1049





KM 1050





KM 1051







KM 1052





KM 1053







KM 1054







KM 1055







KM 1056







KM 1057







KM 1058



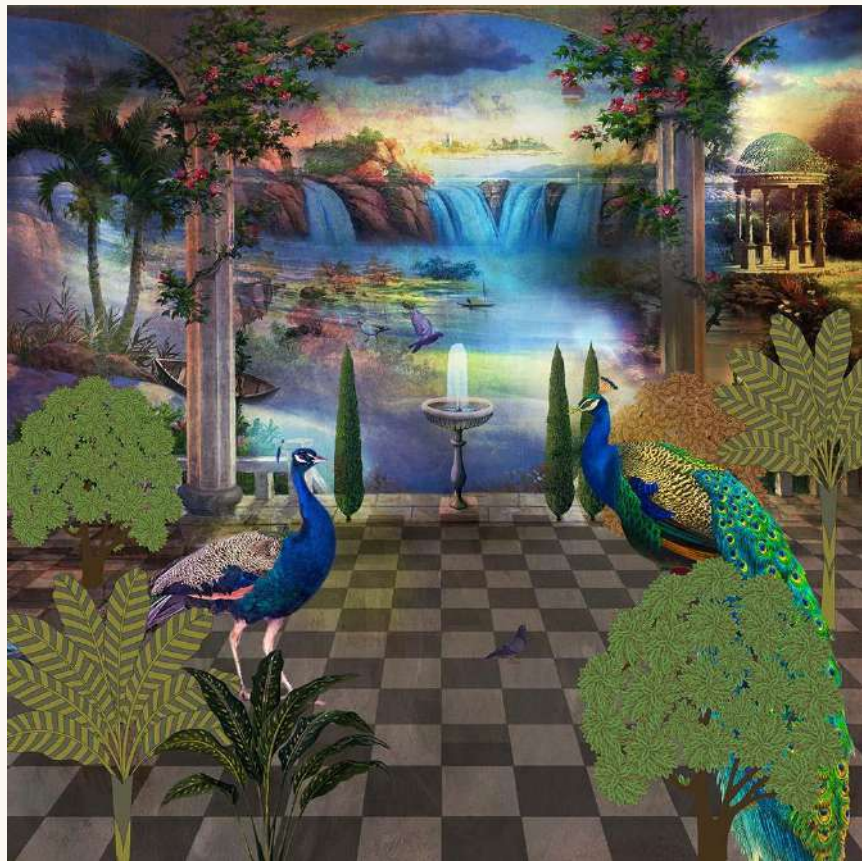




KM 1059







KM 1060





## Technical Specifications

Customised Digital Wallcoverings developed by Marshall's Design Studio (MDS) with a flexibility to accommodate the designs as per your wall size.

### Product Specifications :

- Imported Non-woven, Vinyl Textures with paper backing digitally printed with eco-friendly water based inks.
- Sponge washable, • Colour- fast, • Recommended for interiors.
- Minimum order quantity per design 2 sqm and then in multiples of 0.5 sqm.
- Width per panel may vary from 36 - 59 inches.
- Preview image will be emailed to customer for approval before printing.

### Measurement :

- Standard design is in 1:1 ratio. Any other ratio is also provided as per customer requirement. However converting into other ratios may result in some variations from the original image. Final image with the dimensions asked for will be emailed to the client for approval.
- All orders will be accepted in square meters only.
- Take due care that 3 cms additional is taken in height and width on any one side
- Design once printed cannot be rejected or cancelled.

### Delivery Time :

- Production time is minimum 2 working days on approval of resized design by the customer.

### USP of Marshall's Digital Printed Wallcoverings :

- We print the wallcoverings with a 8-10 pass process using original imported inks thereby ensuring vibrant and long lasting colours.

### Certified for a Greener Tomorrow :

At Marshall's Design Studio, sustainability isn't just a commitment—it's a standard we uphold in every product we offer. We're proud to feature globally recognized certifications that reflect our focus on health, safety, sustainability and environmental responsibility:



Our products are certified for reduced environmental impact. The ECOLOGO® certification ensures that our materials meet stringent, lifecycle-based environmental performance standards.



We care about indoor air quality. GREENGUARD® Gold certification means our products are rigorously tested to ensure low chemical emissions, making them safe for homes, schools, and healthcare environments.



Efficiency means performance. ENERGY STAR® certified solutions contribute to lower energy usage and reduced carbon footprint—ensuring our practices stay future-forward.



It helps identify products that meet comprehensive environmental criteria across their lifecycle—from design to end-of-life. It's a mark of eco-conscious innovation.





Manufactured with pride by



**marshall's**  
India's No.1 Wallcoverings



[WWW.MARSHALLSINDIA.COM](http://WWW.MARSHALLSINDIA.COM)